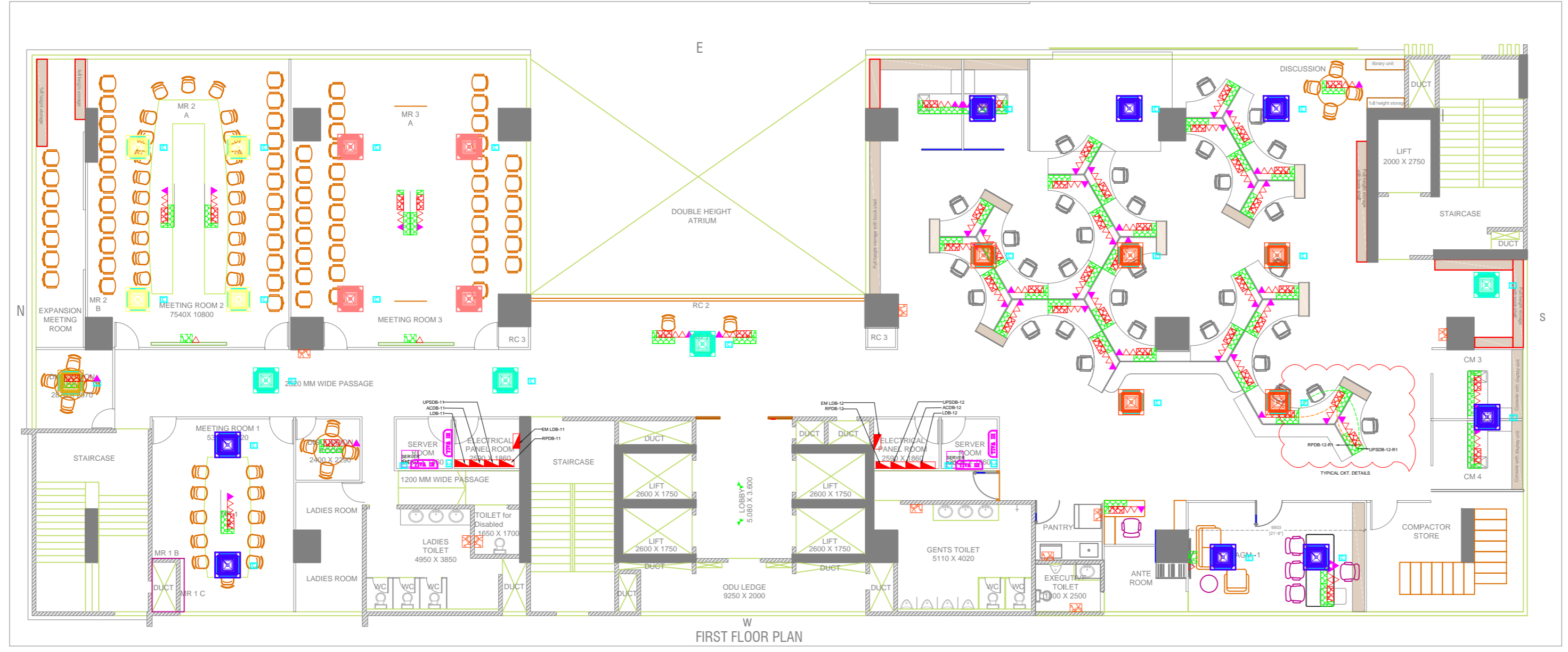
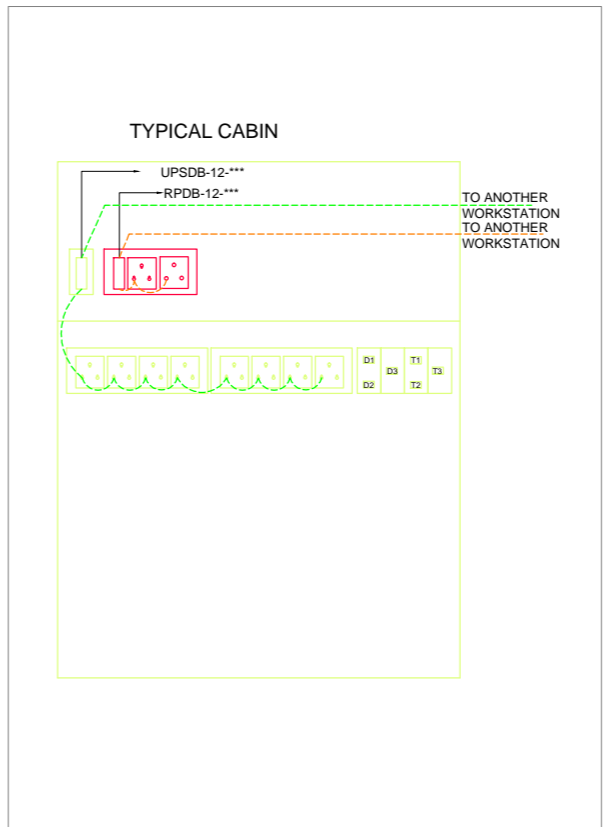
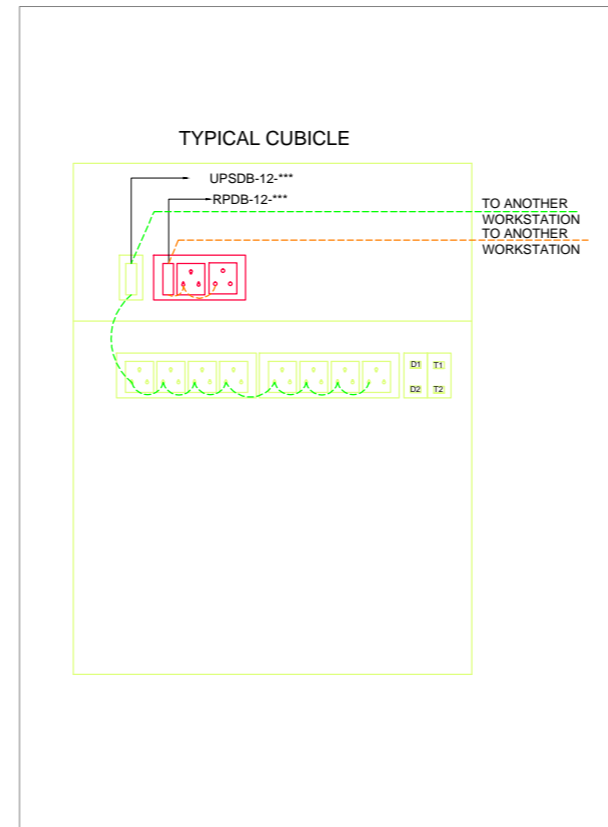
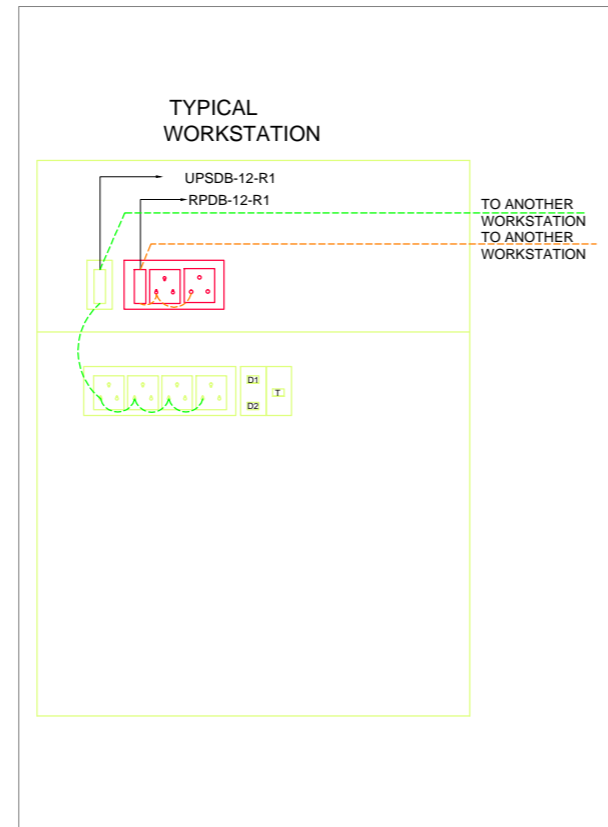
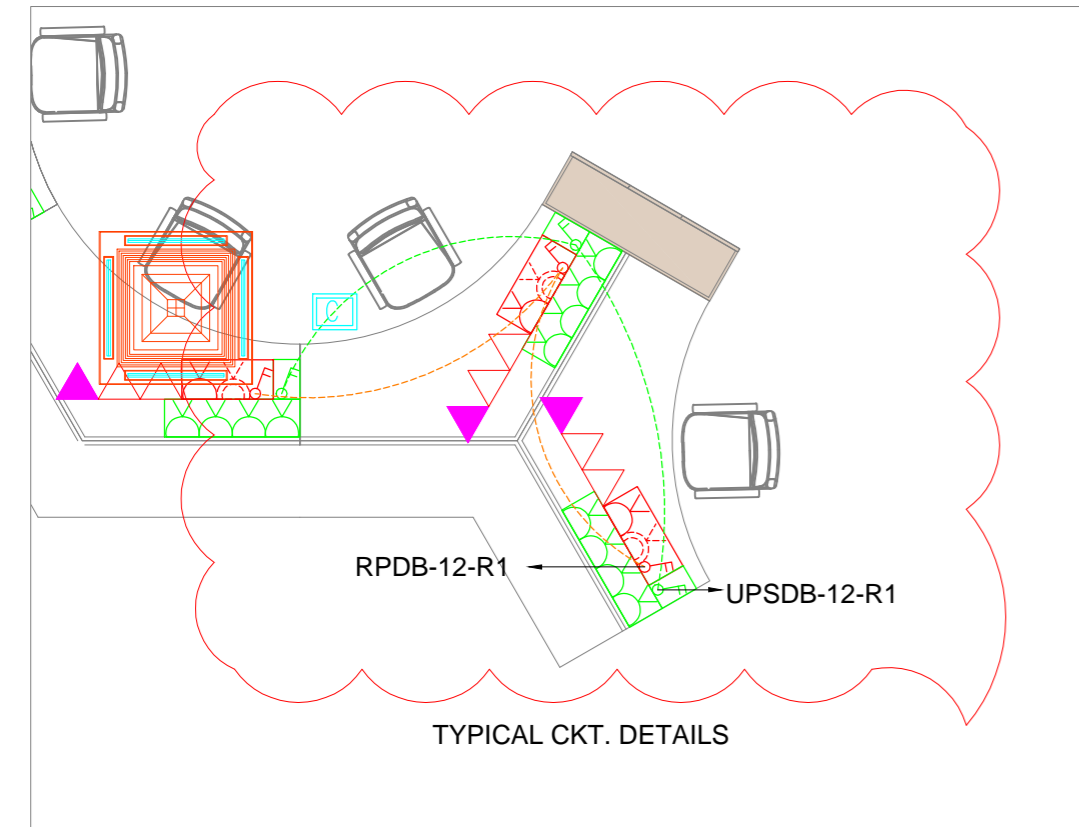


TENDER DRAWING



LEGEND:

SYMBOL	DESCRIPTION
	UPS POWER POINT
	1 NO-16A 1 SWITCH & 1 NO 6/16A SOCKET
	4 NOS-6A SOCKET(BELOW TABLE)-UPS POWER
	1 NO-16A SWITCH(ON TABLETOP)-UPS POWER
	ELV
	DATA POINT
	VOICE POINT
	RAW POWER POINT
	16A 1 SWITCH & 1 NO 6/16A SOCKET
	1 NO-6A SOCKET + 1 NO-16A SOCKET + 1 NO.16A SWITCH(ON TABLE TOP)-RAW POWER
	6A 1 SWITCH & 1 NO 6A SOCKET
	CONNECTOR FOR POWER SUPPLY FOR AC INDOOR UNIT AT CEILING/WALL AT NEAREST LOCATION
	DISTRIBUTION BOARDS



R-1	REVISED AS PER COMMENTS	MSP	SMJ	PSK	25.10.24
R-0	TENDER DRAWING	MSP	SMJ	PSK	22.10.24
REV	PARTICULARS OF REVISION	DRN	BYCHKD	BYAPRD.BY	DATE

REVISIONS IN DRAWINGS

ARCHITECT :-
-
PMc :-
-
CLIENT :-
MITIMITRA ARCHITECT AND ASSOCIATES
PROJECT :-
CLOCK TOWER, LHO, SBI, KHARADI, PUNE

TITLE :-
POWER LAYOUT-FIRST FLOOR

SCALE	DATE	DRG NO.	REV.
NTS	22.10.24	1658-EL-PP-01	R-0

Sheet 1 of 1
ORIENTATION

RELEASED FOR PRELIMINARY TENDER INFORMATION APPROVAL CONSTRUCTION